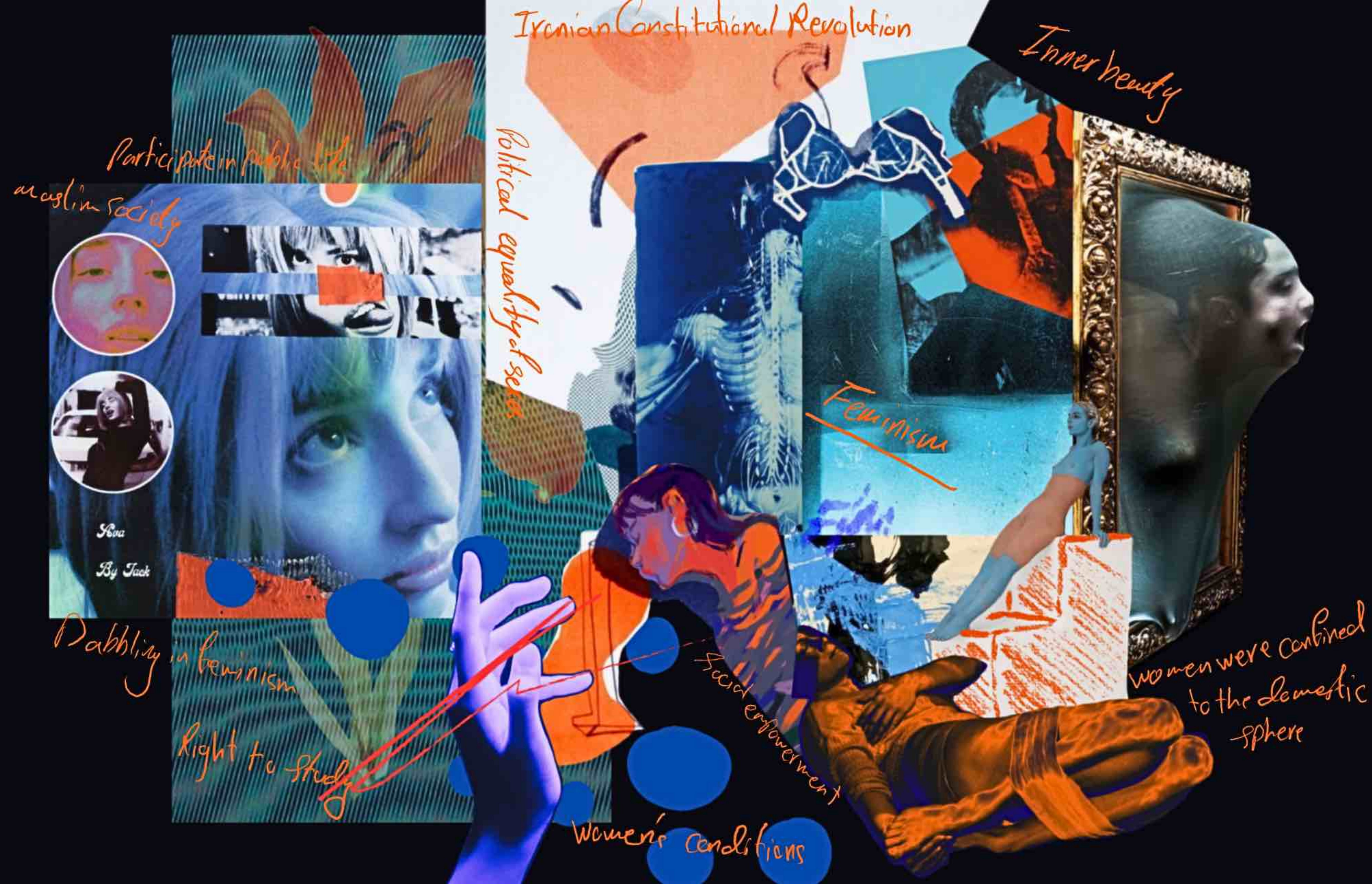


ADAM AND EVE





Iranian Constitutional Revolution

Inner beauty

Participate in public life
as a Muslim society

Political equality of sexes

Feminism



Reza

By Jack

Dabbling in feminism

Right to study

Social empowerment

Women's conditions

women were confined
to the domestic
sphere



INNOVATIVE SURFACE TECHNIQUE & TREND RESEARCH:

G

runge is a fashion trend that emerged in the mid-1980s

Popularity of a subgenre of rock music called grunge music derived from Hard rock, punk, and metal music.

Bands: Nirvana, Alice in Chains, Sound Garden and Pearl Jam gave their own distinction to this music.

Youth who saw this as a representation of their rebellion and defiance against societal norms.

Trend of fashion that went against everything ostentatious and over-the-top. It was against whatever was in fashion at that period.

Ripped, torn, ragged, damaged, threadbare clothes – wearing these clothes conveyed a message to the society about the rebelliousness of this style against over-consumerism.

In this trend you can wear all of them together – they need to be in subdued colors and you should also carry them all with attitude. A long sleeved t-shirt was often worn over a short sleeved one. Another popular layering style was the flannel shirt over t-shirts, tank tops and crop tops.

Dark does not necessarily mean black in grunge as it is in goth fashion. The style incorporated metallic details in clothes and accessories such as metal studs, chains and straps, and jewelry like rings. Leather chokers with metallic studs.

This included ankle length leather boots.

The plaid patterned flannel shirt was part of the layered style in grunge. The flannel shirts were worn over graphic tees – both baggy.

Mom jeans, boyfriend jeans – all types of baggy jeans are preferred over slim fitting jeans.



Fabric/ Materials Board and Color Palette



Pattern 1



Gauge Blue Tinted Plastic Vinyl



Pattern 2



Silk georgette durable, dull, grainy and has a billowing type drape. Silk polyester



Silk Jaquard cloque



White crepe back satin fabric



Double faced Jaquard brocade fabric




PANTONE®
11-0601 TCX
Bright White

PANTONE
11-0510 TCX

PANTONE
Twilight Blue 19-3938 TCX

PANTONE®
17-1553 TCX
Pabrika

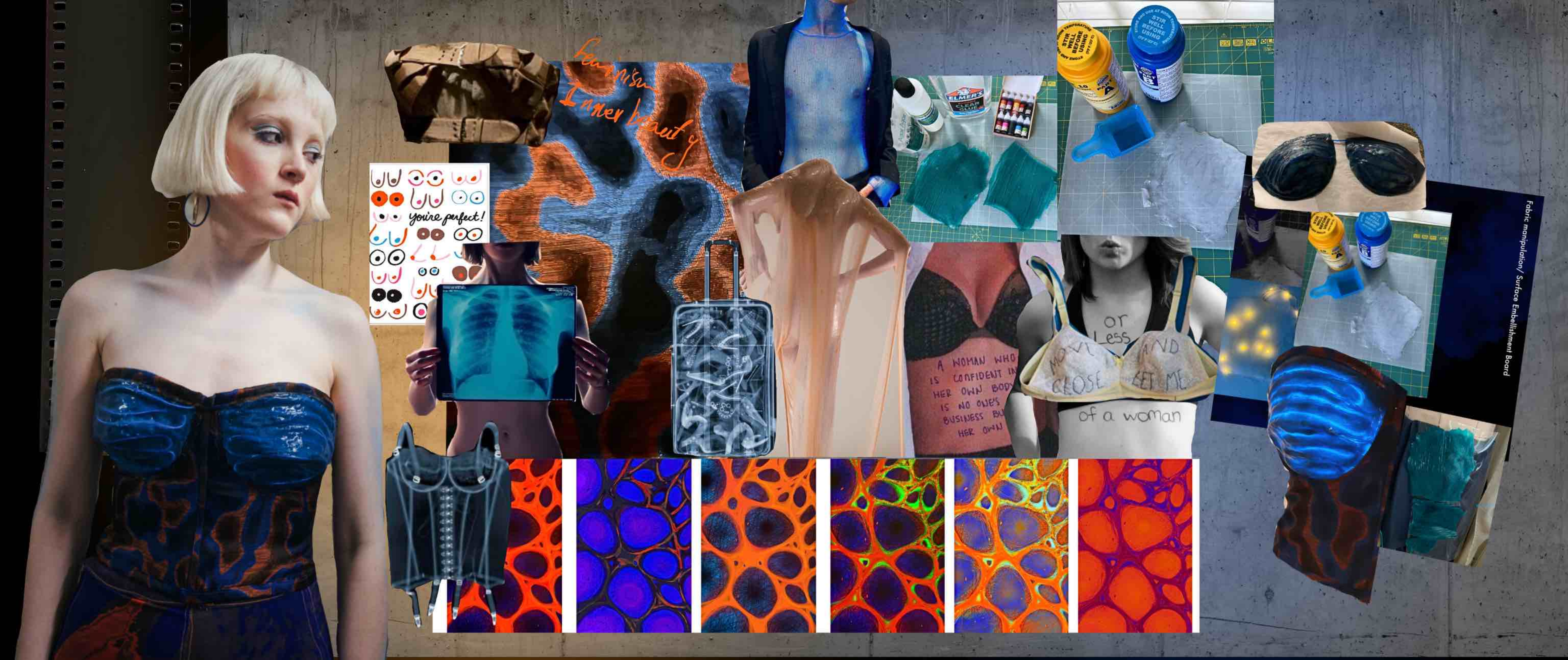
PANTONE®
16-1260 TCX
Harvest Pumpkin

PANTONE®
Black 3 CP

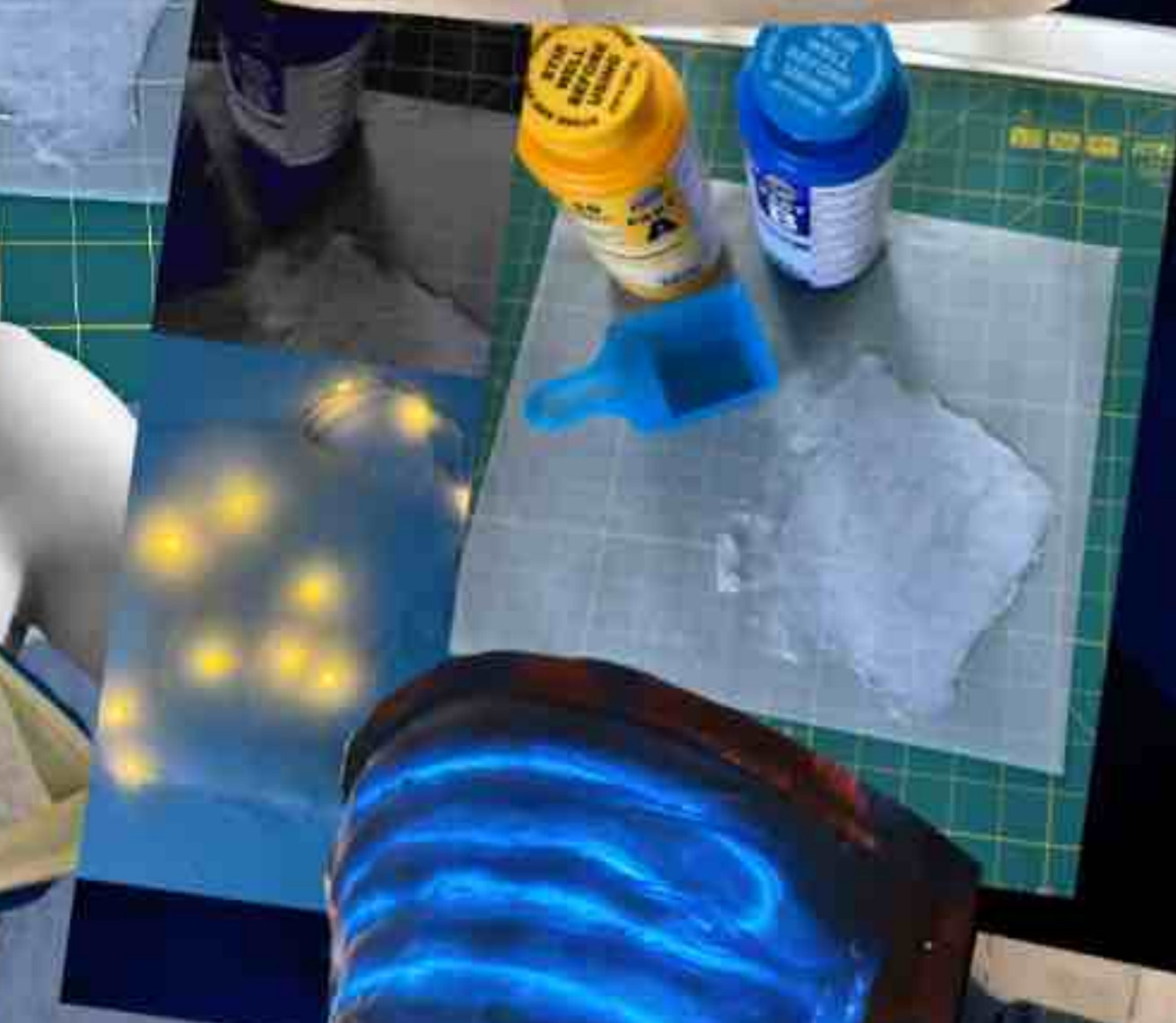
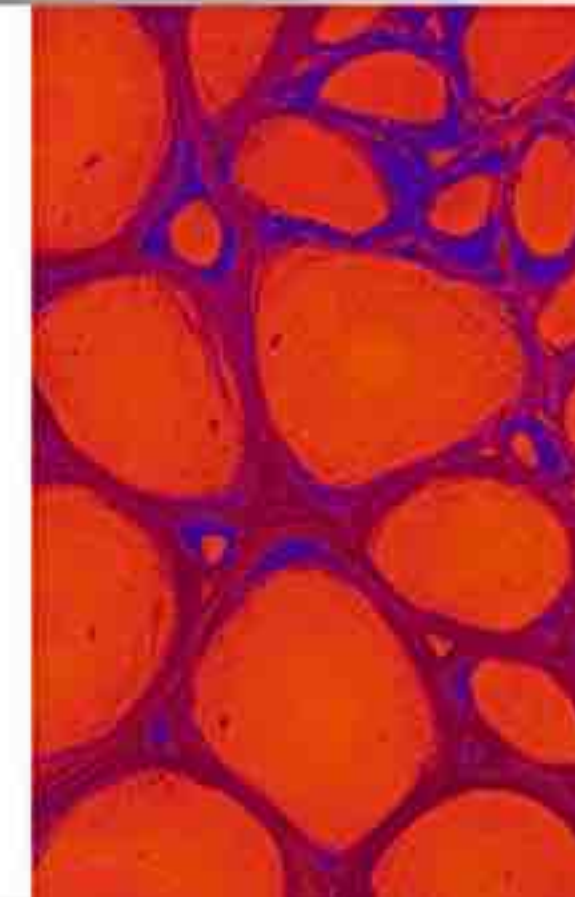
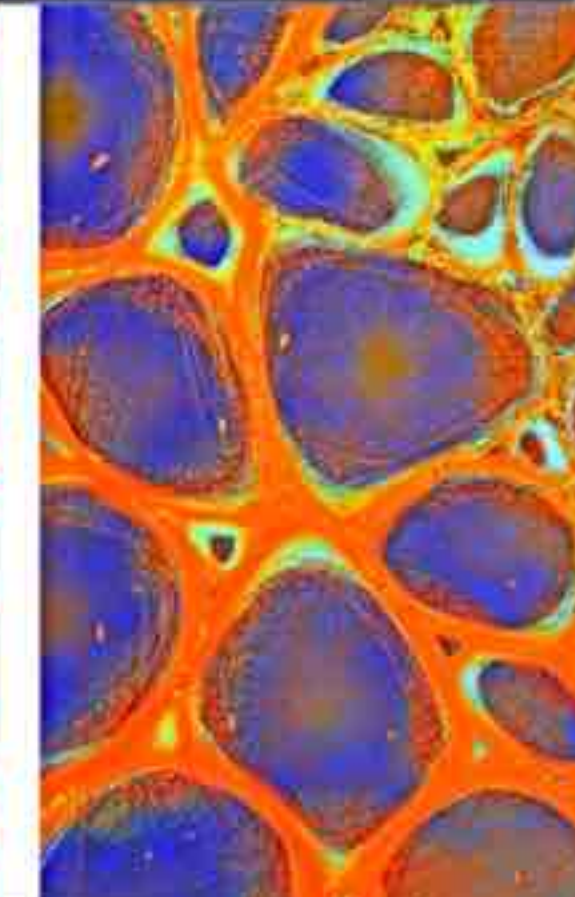
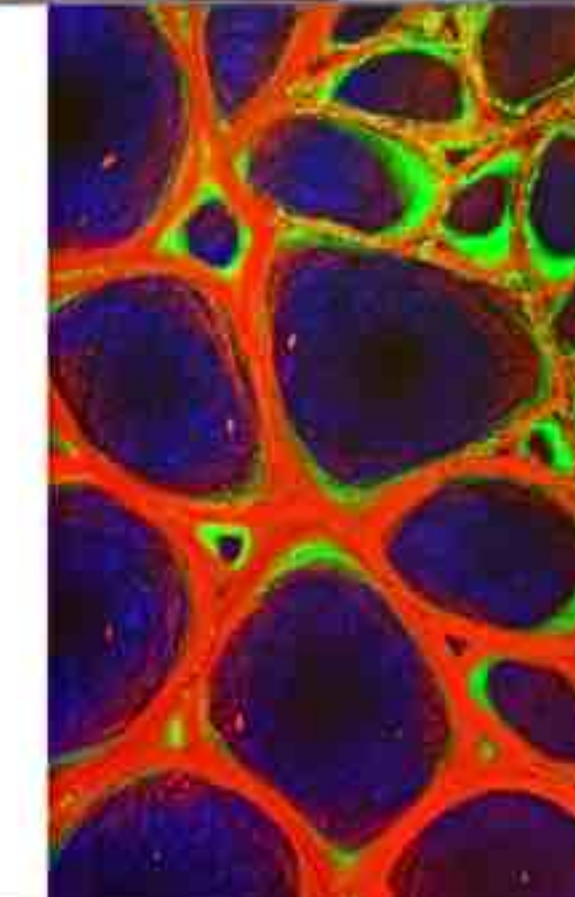
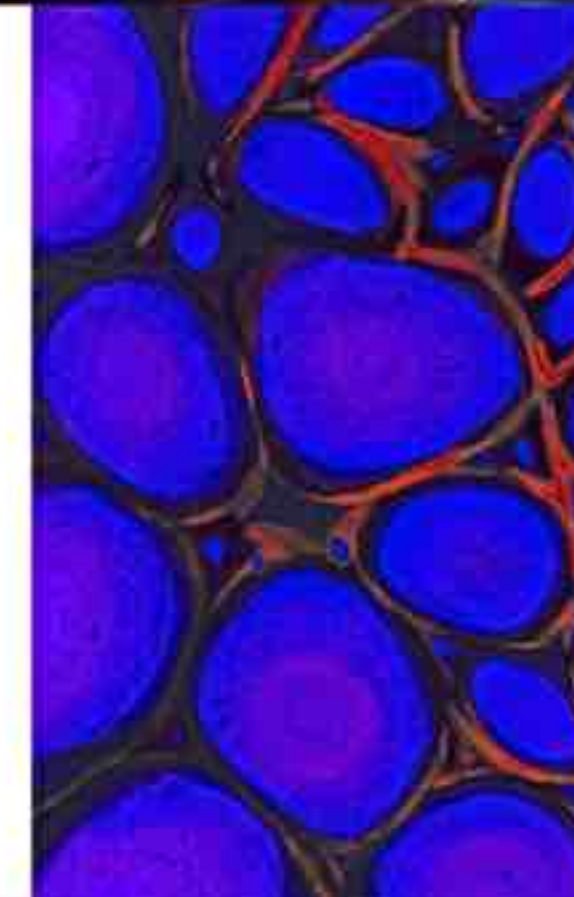
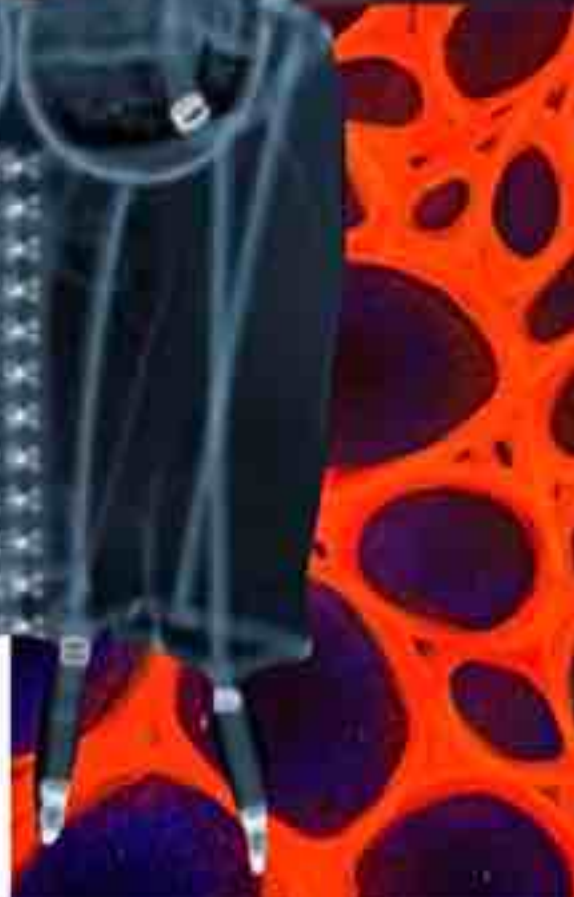
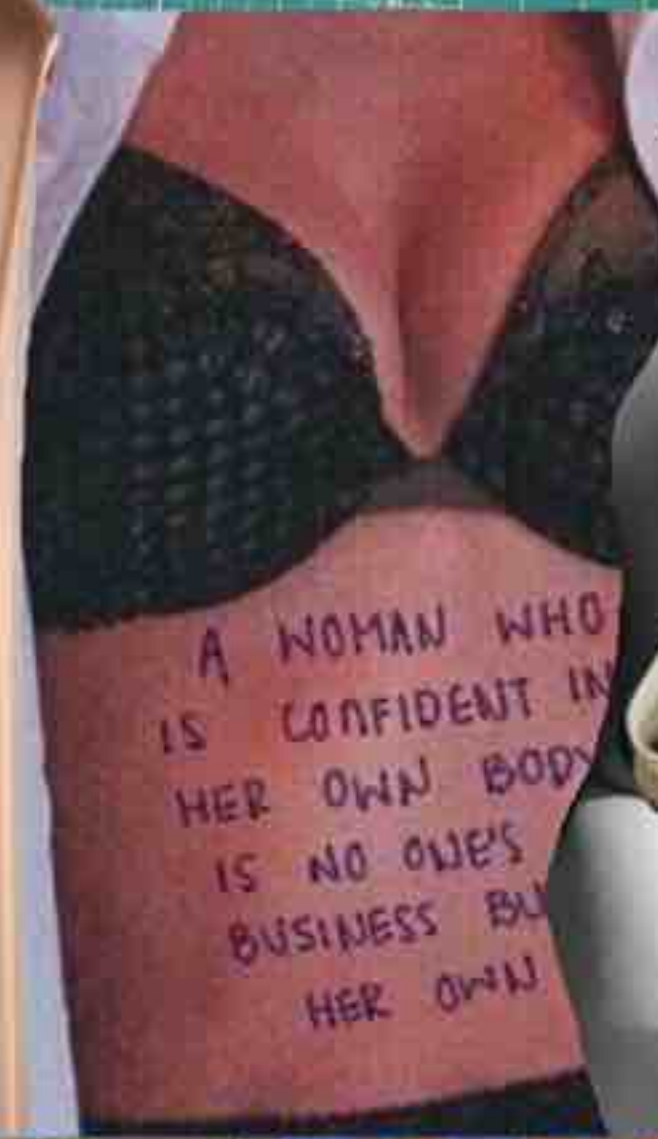




Visible light Ultraviolet light Soft X-ray Infrared Hard X-ray Visible ray



feminism
inner beauty

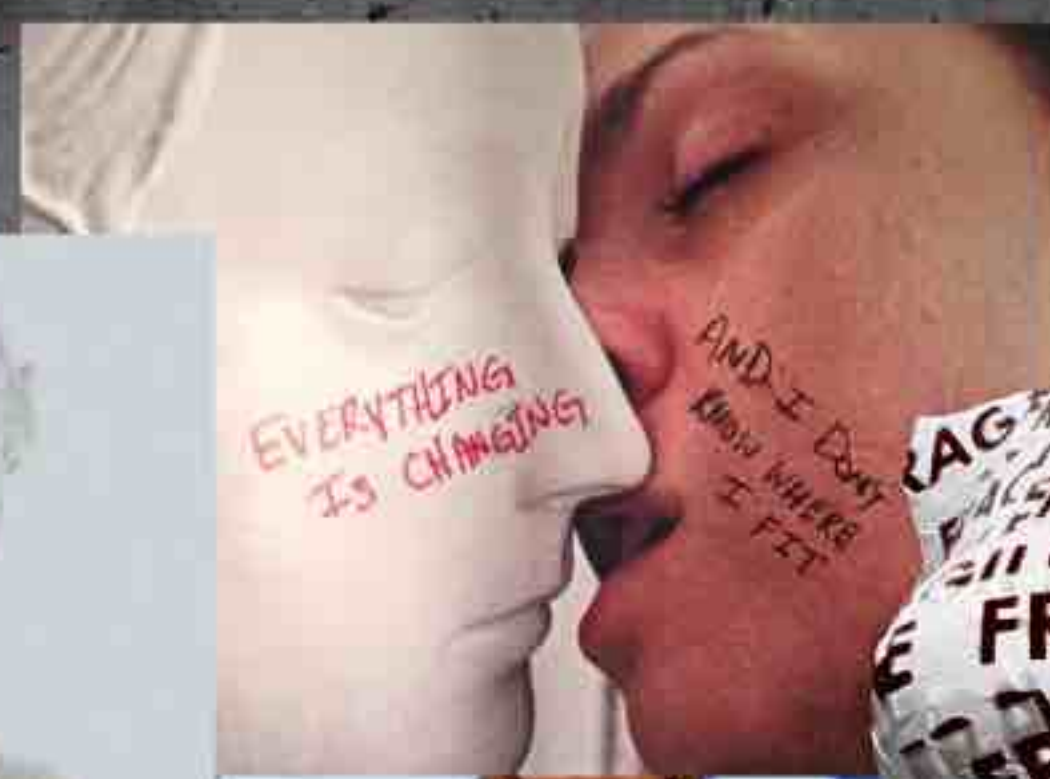
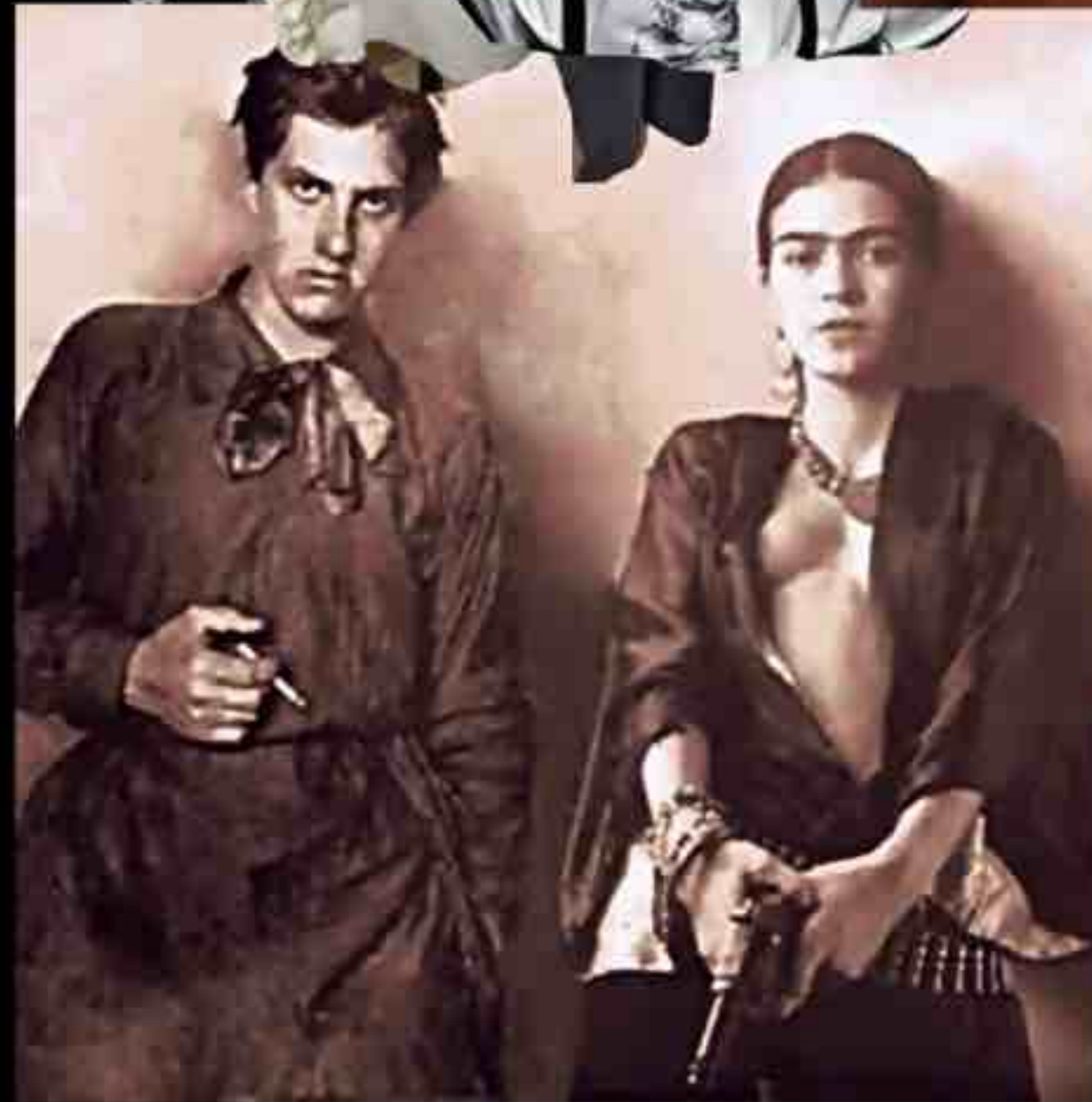
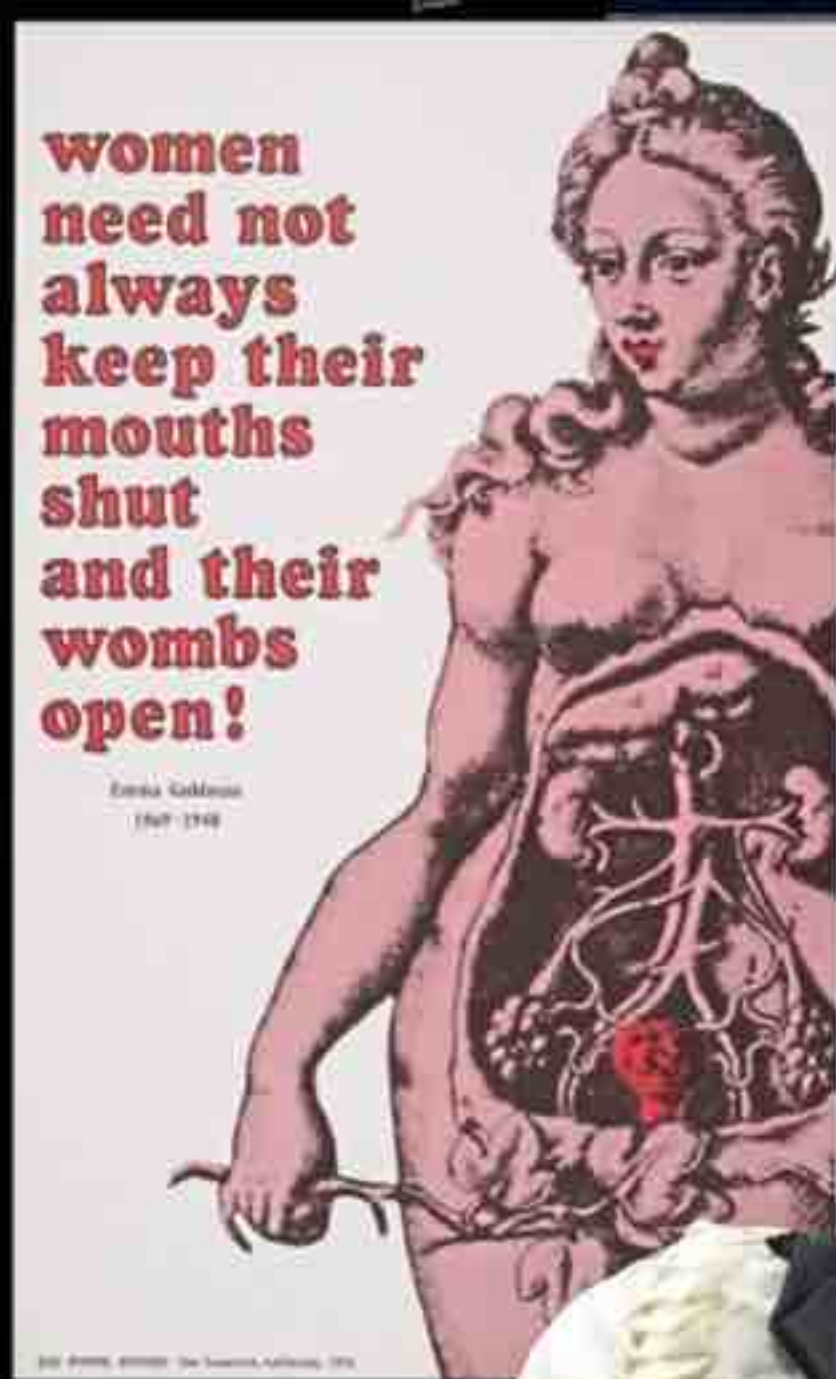


Fabric manipulation/ Surface Embellishment Board



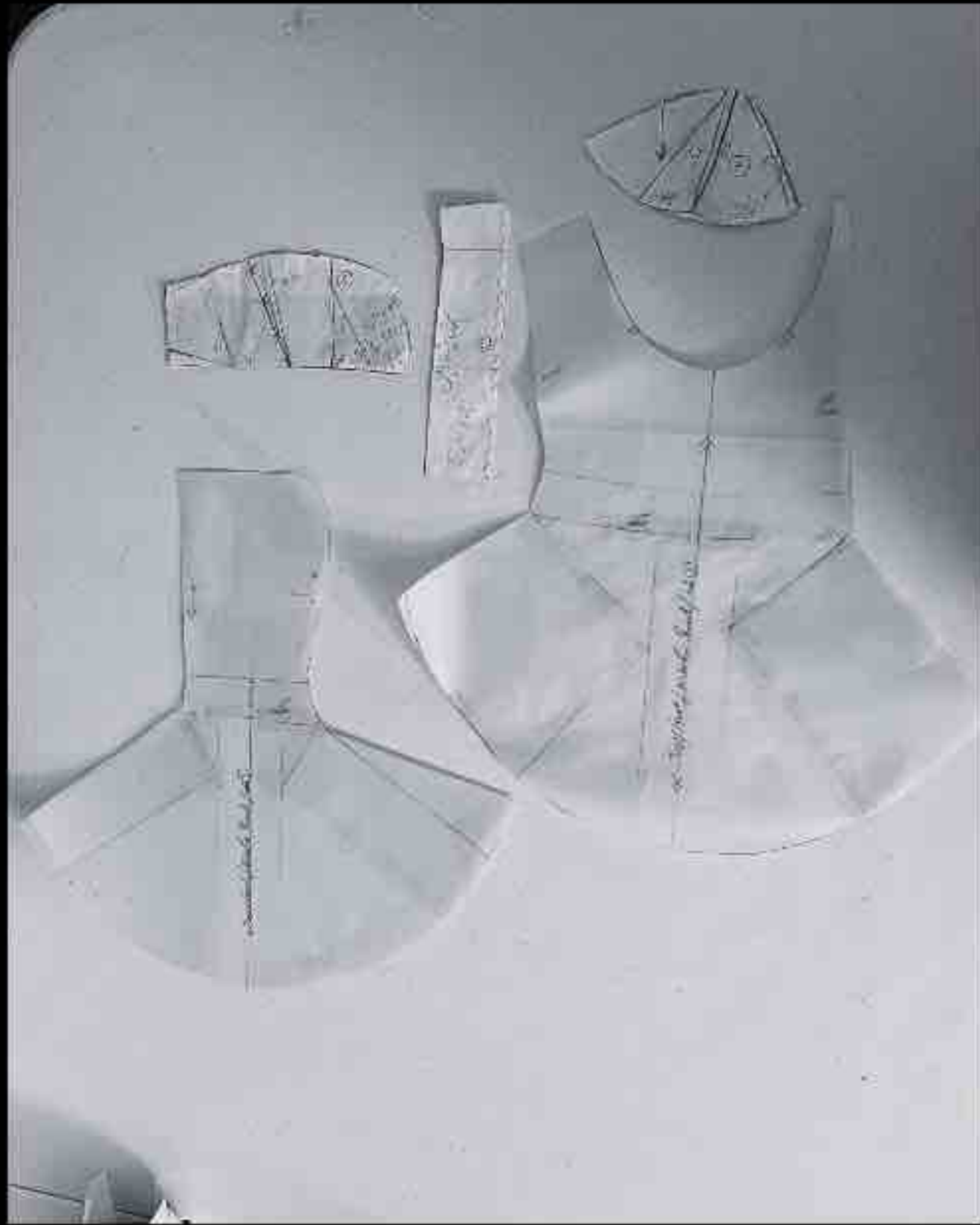






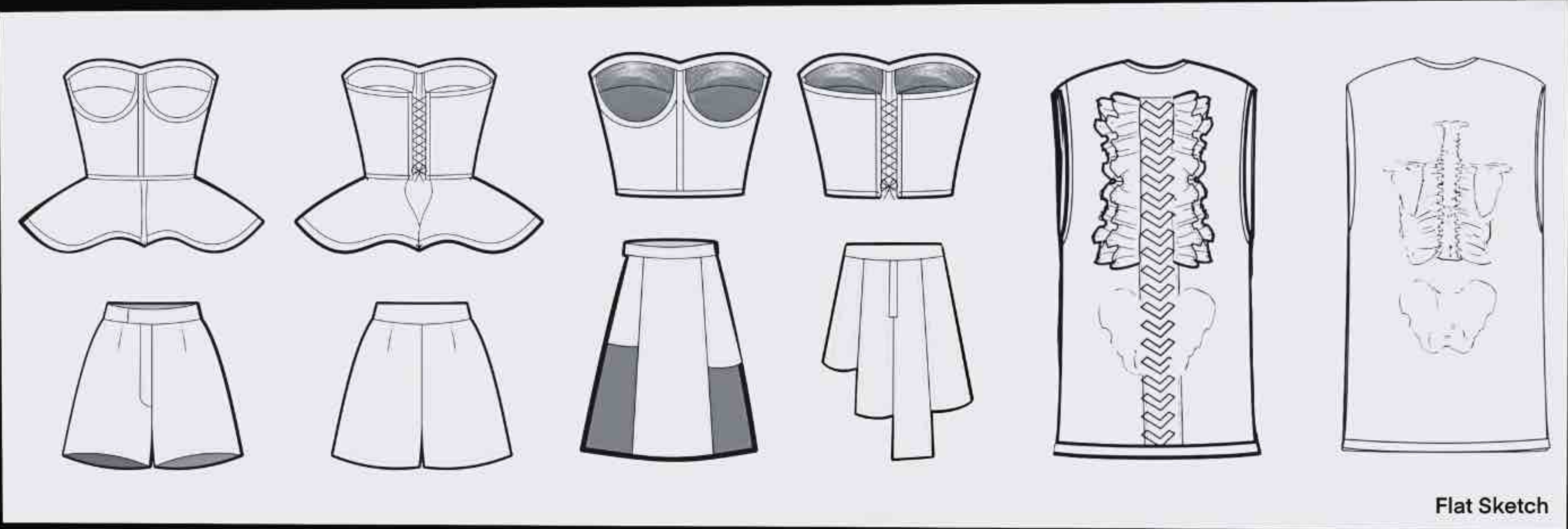






9A

9



Flat Sketch

