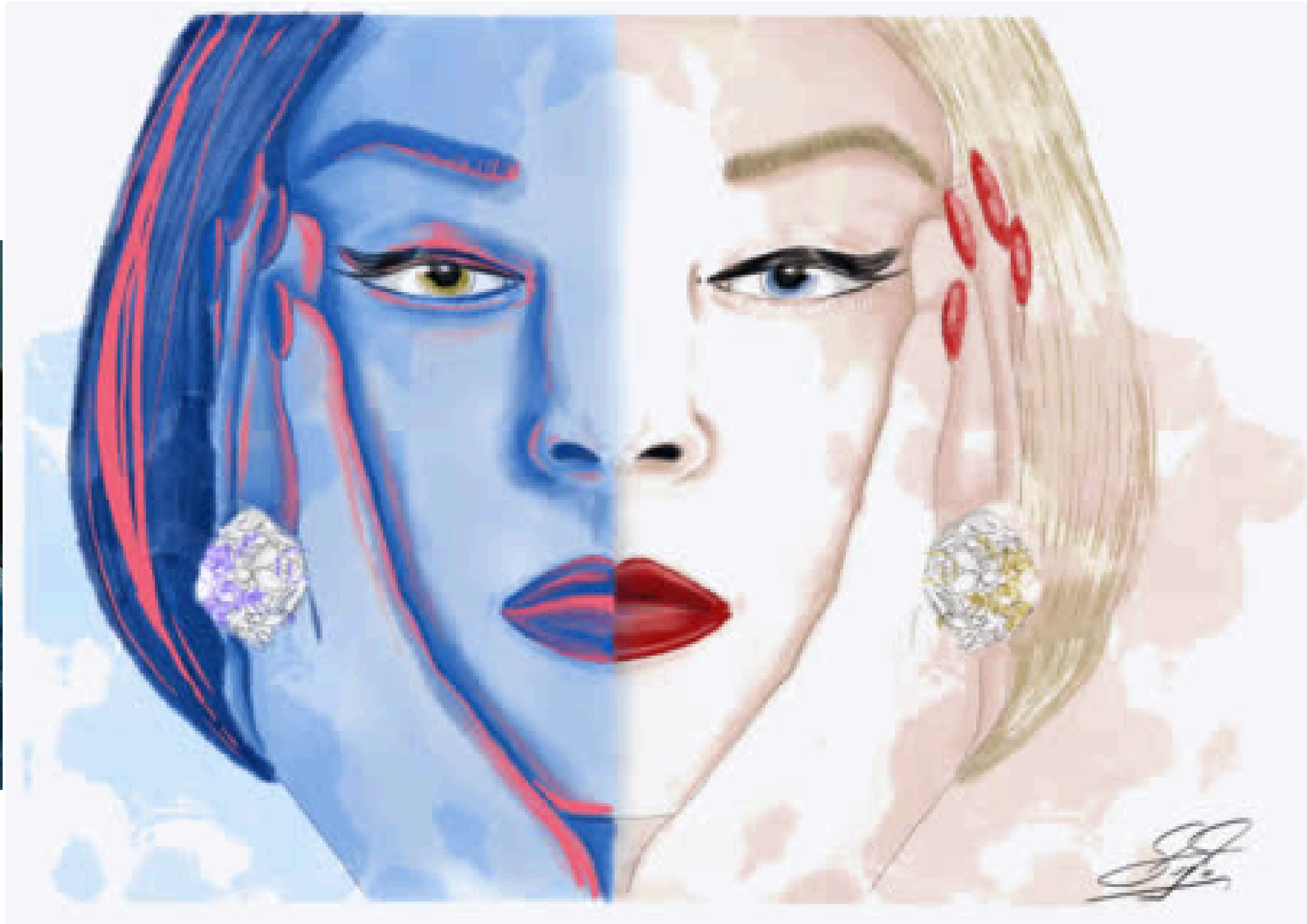
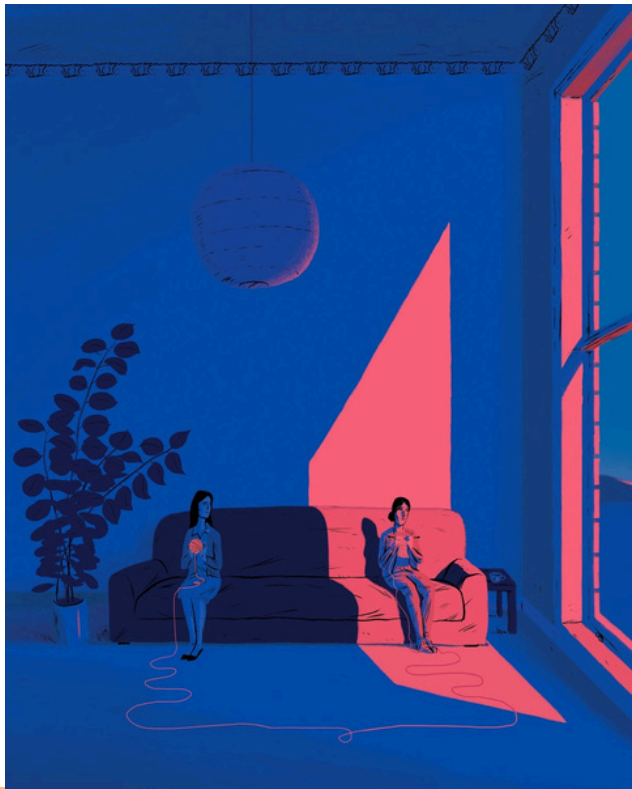


ASSIGNMENT

Gif

Niloofer Shariati
Fash 724
Professor Mengjie Di



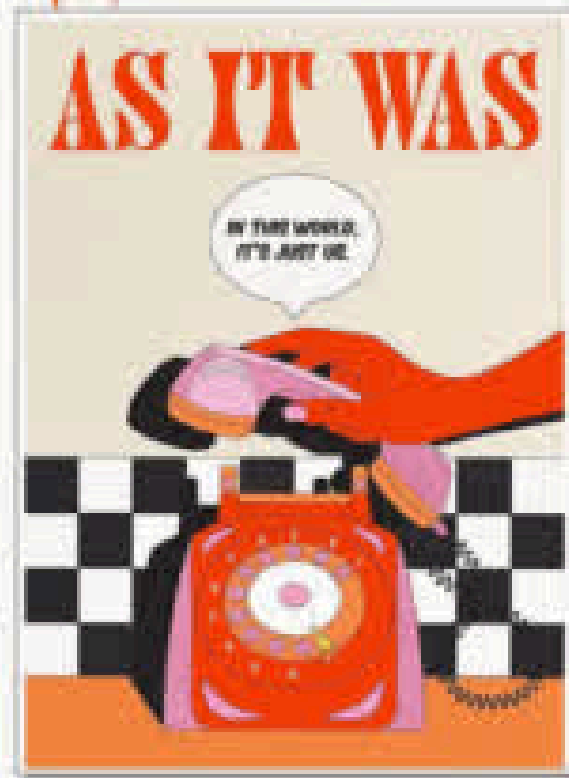
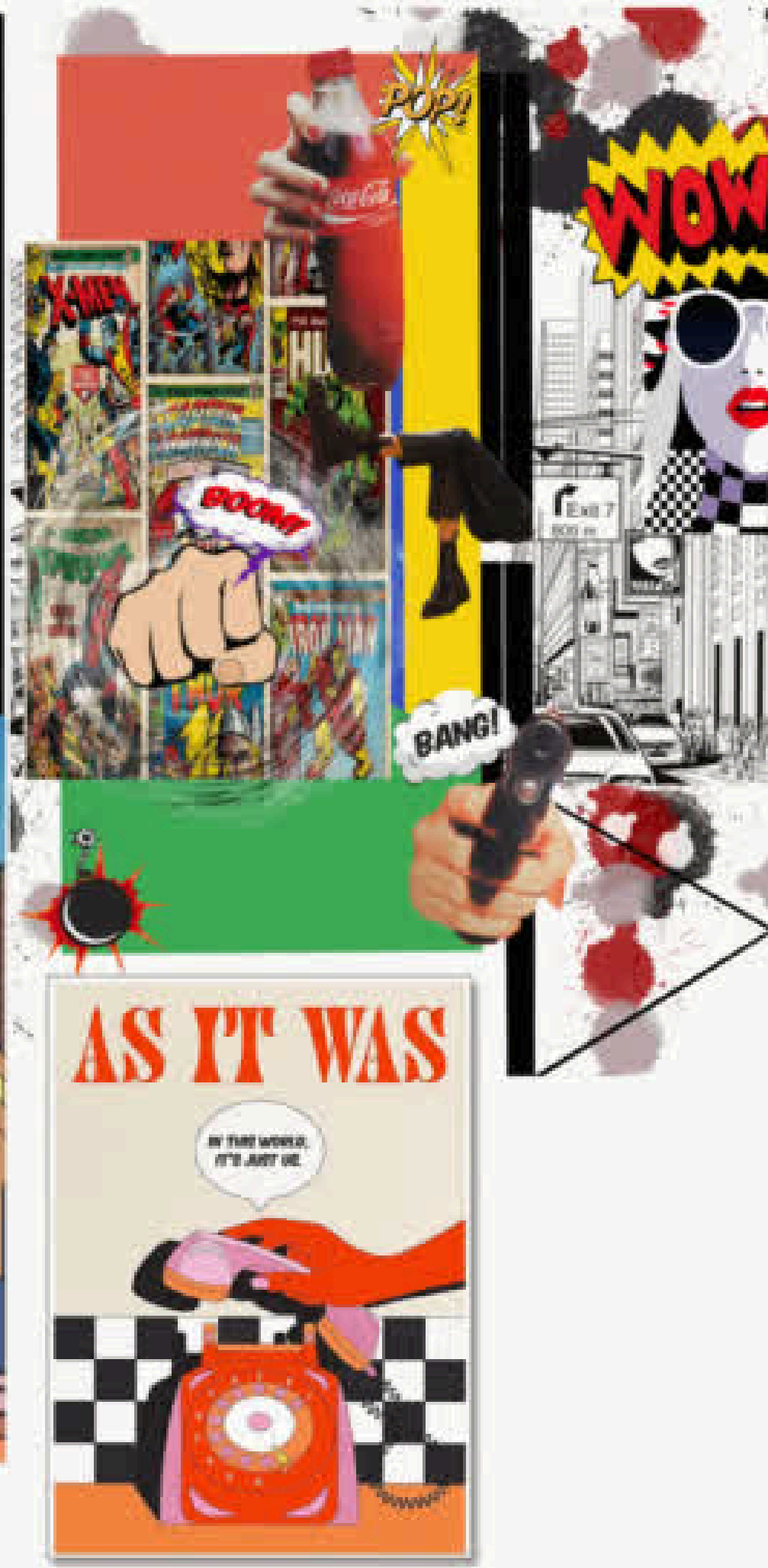
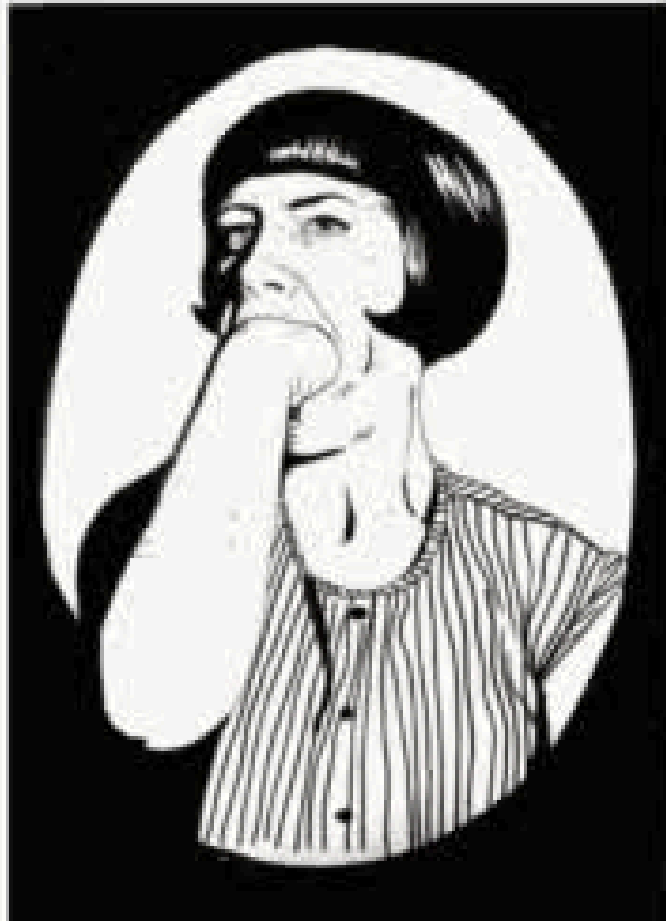


For this work I used Procreate app to make a gif.

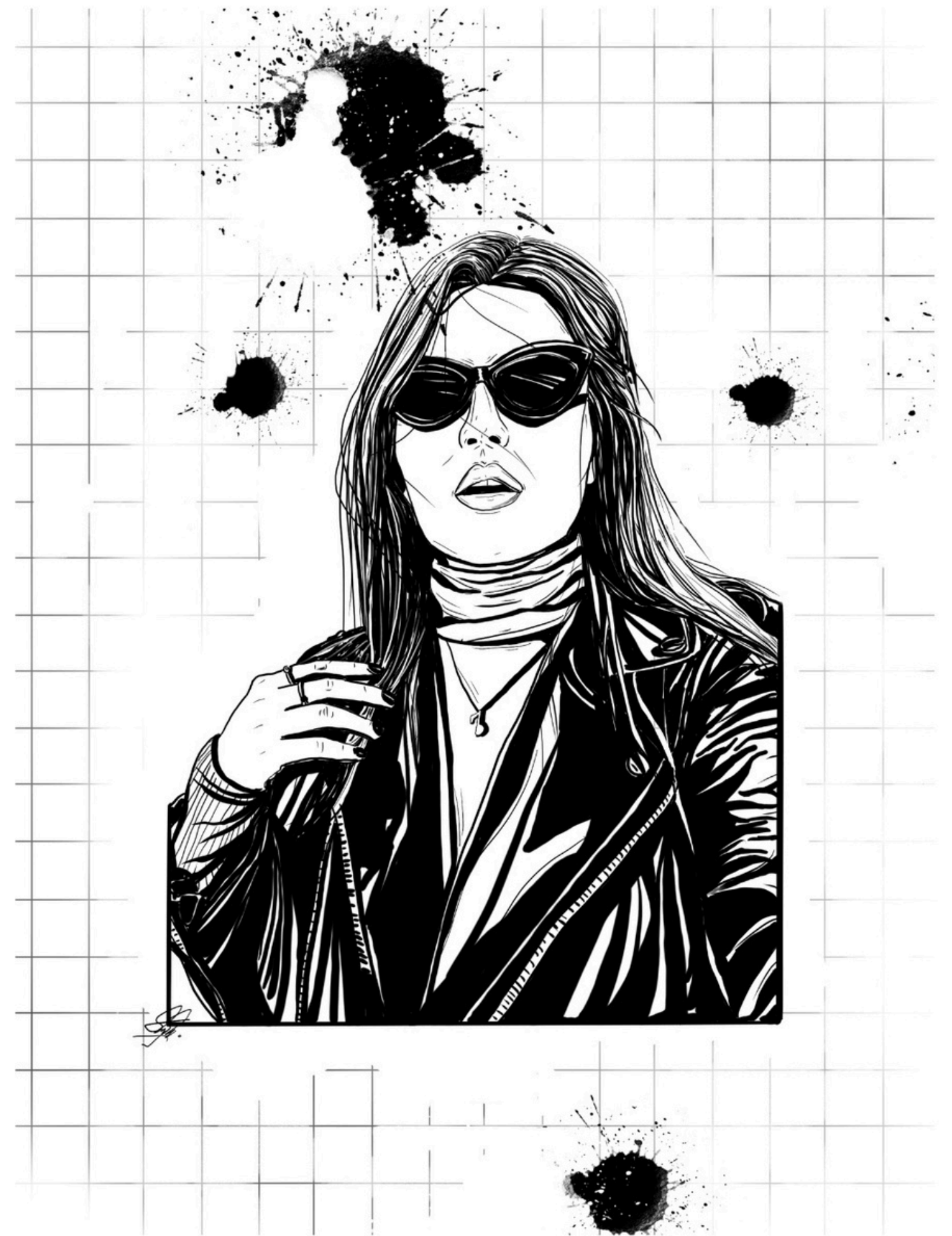
I wished I could completely change all the parts of the face and transform the face into other characters. Better transmission of the sense of the design and naturalization of the feeling given to the design is one of the strong points of this project.

Its weakness is the stability of the rest of the details

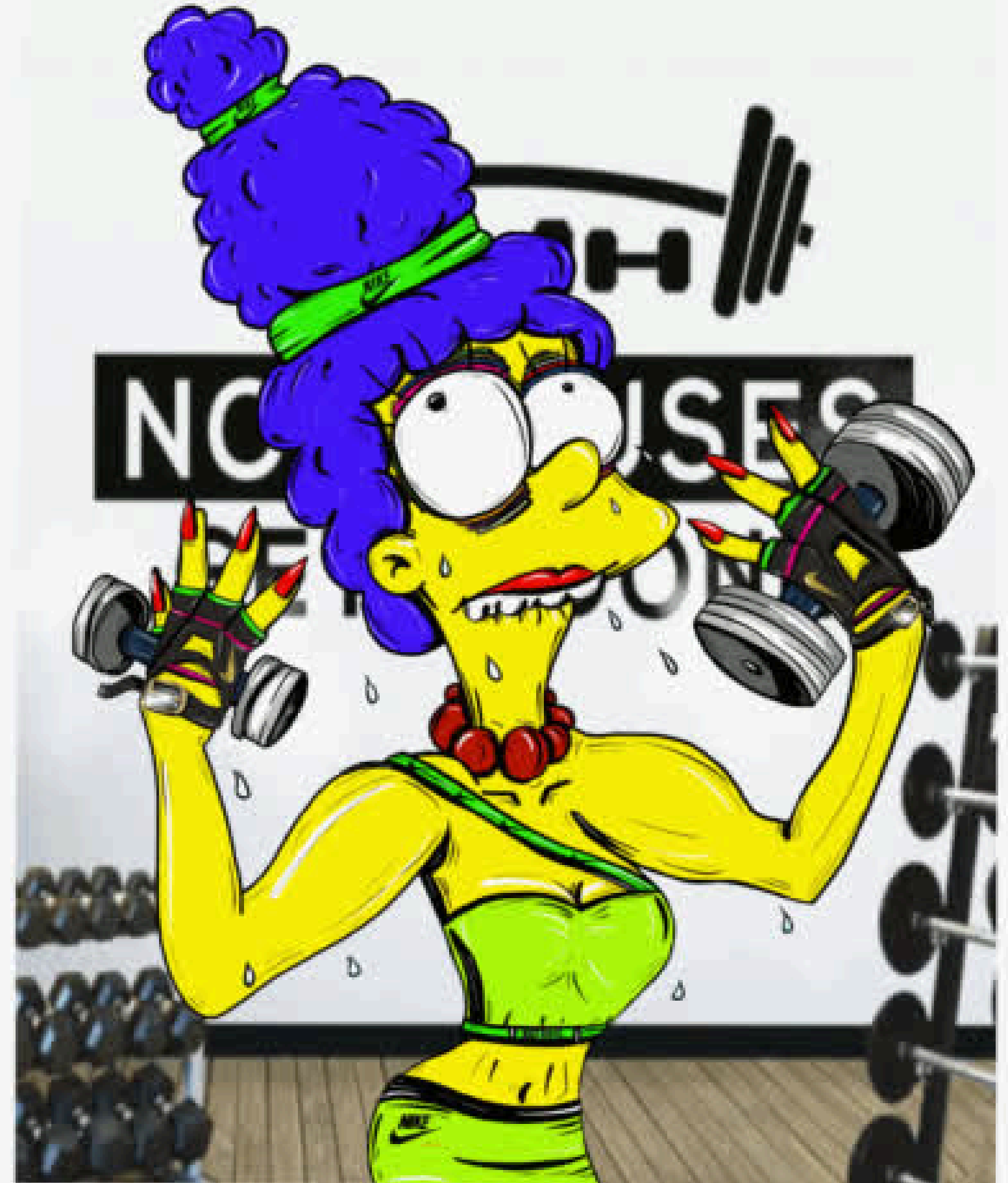
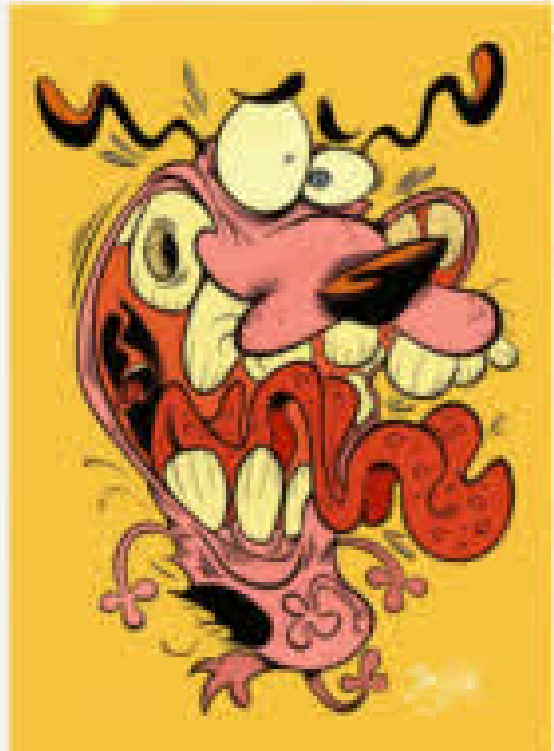
Moodboard



For this work I used Procreate app to make a gif.
I wished I could completely move whole body of the character.
Since this design is a 2D comic design, using it has given an interesting movement to the design, which is like a prominent design.
Its weakness is the stability of the rest of the details and shadows.



Moodboard





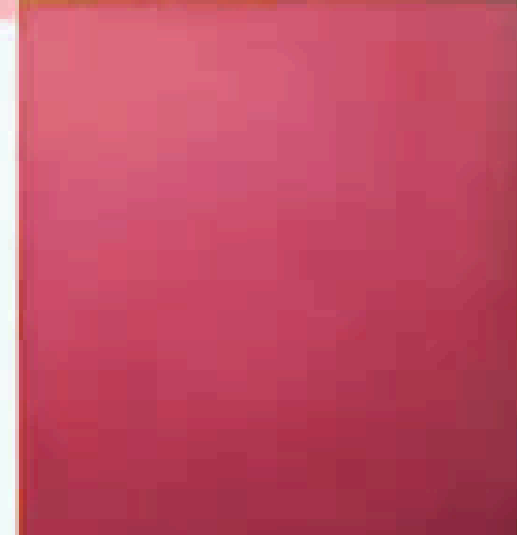
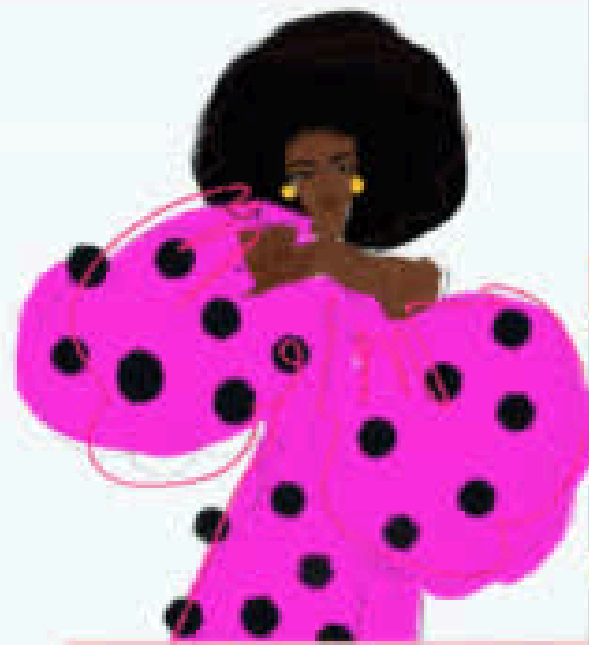
For this work I used Procreate app to make a gif.

In this work, I wanted to show movements from the position of exercising
In this work, I wanted to show
movements from the position of exercising.

The strength of this work is the better touch of graffiti work, which we often see as 2-dimensional.

Its weakness is the stability of the rest of the body.

Moodboard





For this work I used Procreate app to make a gif.
I wished I could completely change all colors.

The strength of this work is playing with colors and creating a natural feeling in that atmosphere.
The weakness of this work is the limitation in creating movement in this design.