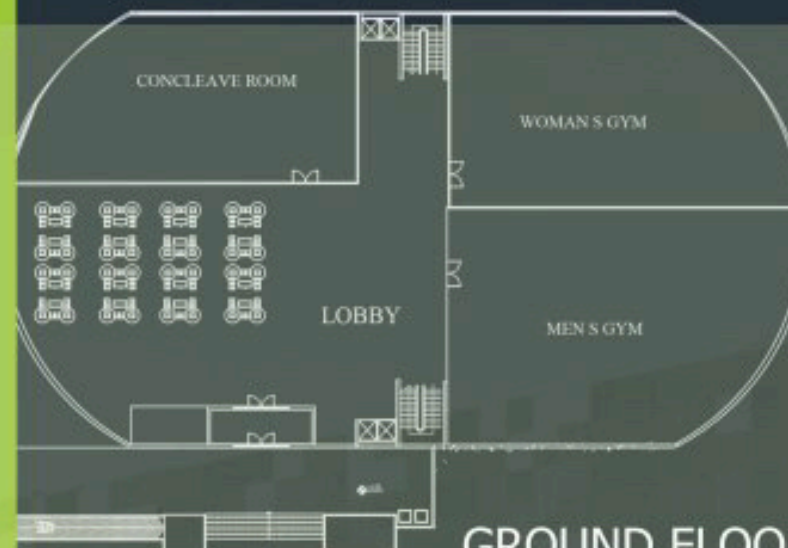


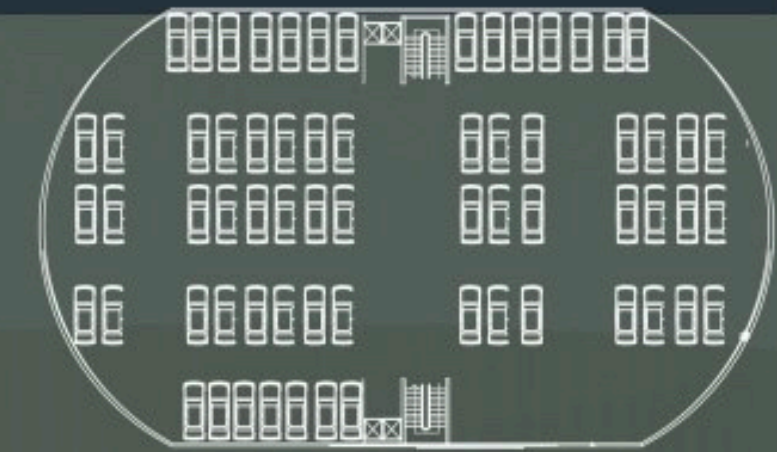
# RESIDENTIAL COMPLEX

PROF: SARKAR KHANOM MOHANDES RAAOF  
STU: NILOUFAR SHARIYATI

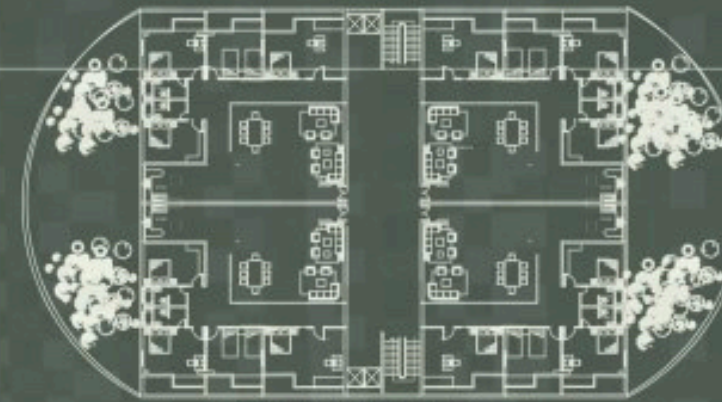
PERSPECTIVE



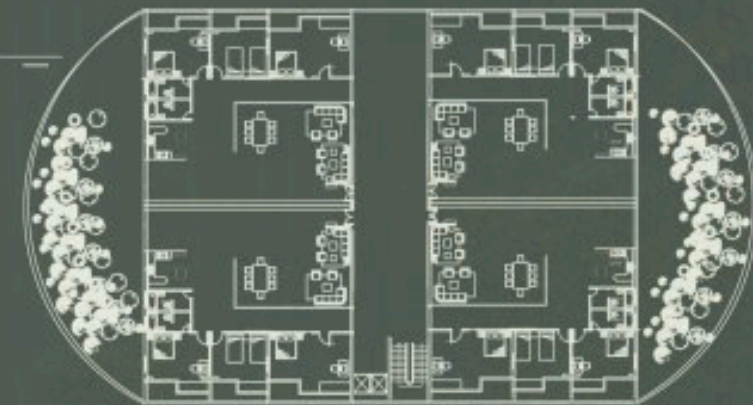
GROUND FLOOR PLAN  
SC:1/200



PARKING FLOOR PLAN  
SC:1/200



SUITES TIP  
SC:1/200

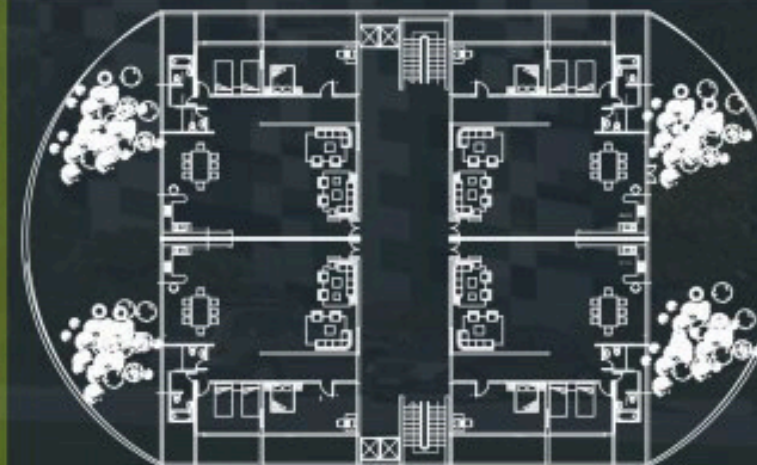


PENTHOUSE  
SC:1/200

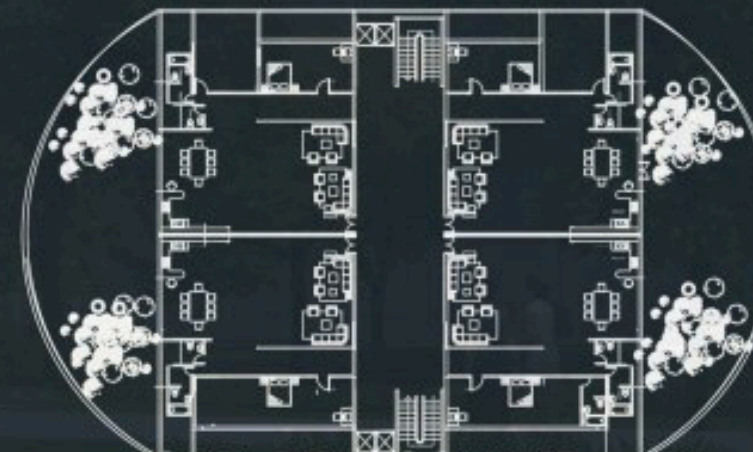
PERSPECTIVE



SITE PLAN

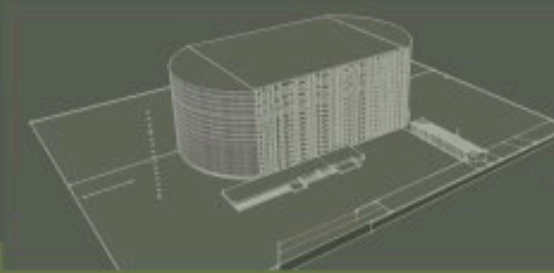


TWO BEDROOMS TIP  
SC:1/200



ONE BEDROOM TIP

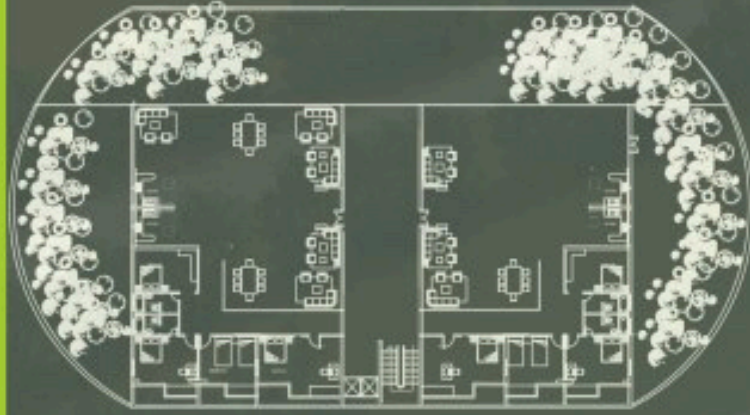
SC:1/200





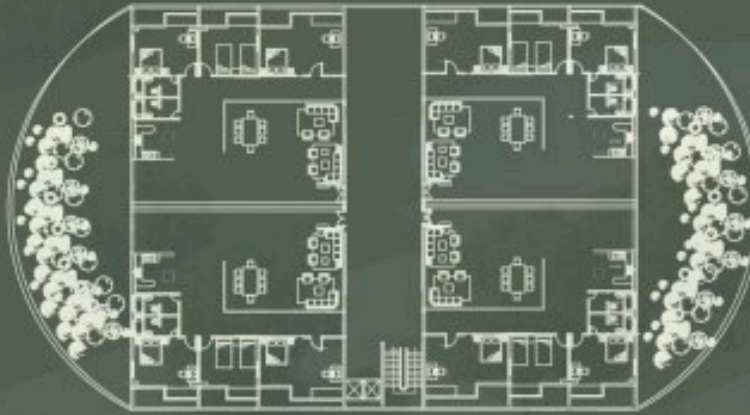
## FOUR BEDROOMS TIP

SC:1/200



## THREE BEDROOMS TIP

SC:1/200

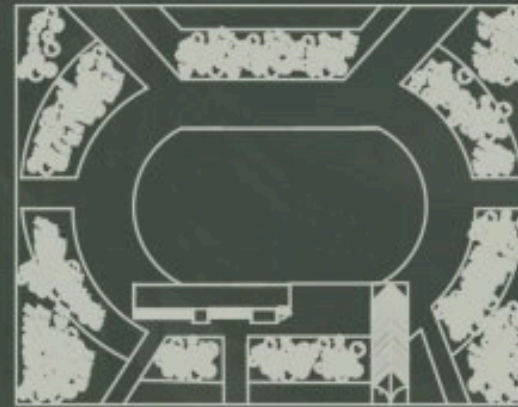


An apartment (in American and Canadian English) or a flat (in British English) is a self-contained housing unit (a type of residential real estate) that occupies only part of a building, correctly, on a single level without a stair. Such a building may be called an apartment building, apartment complex, flat complex, block of flats, tower block, high-rise or, occasionally mansion block (in British English), especially if it consists of many apartments for rent. In Scotland it is called a block of flats or, if it's a traditional sandstone building, a tenement, which has a pejorative connotation elsewhere. Apartments may be owned by an owner/occupier, by leasehold tenure or rented by tenants (two types of housing tenure)



## SITE PLAN

SC:1/500

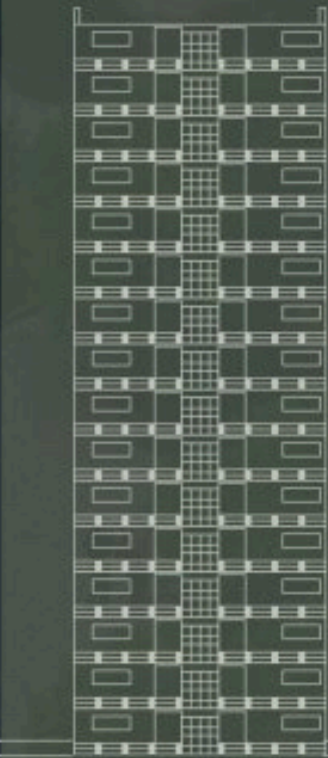


The term apartment is favoured in North America (although in some cities flat is used for a unit which is part of a house containing two or three units, typically one to a floor). In the UK, the term apartment is more usual in professional real estate and architectural circles where otherwise the term flat is commonly, but not exclusively, for an apartment without a stair (hence a 'flat' apartment). Technically multi-storey apartments are referred to as 'duplex' (or 'triplex') indicating the number of floors within the property. Usage generally follows the British in Ireland, Singapore, Hong Kong and most Commonwealth nations.



## SECTION B-B

SC:1/200



## WEST ELAVATION

SC:1/200



## SECTION A-A

SC:1/200



## NORTH ELAVATION

SC:1/200



